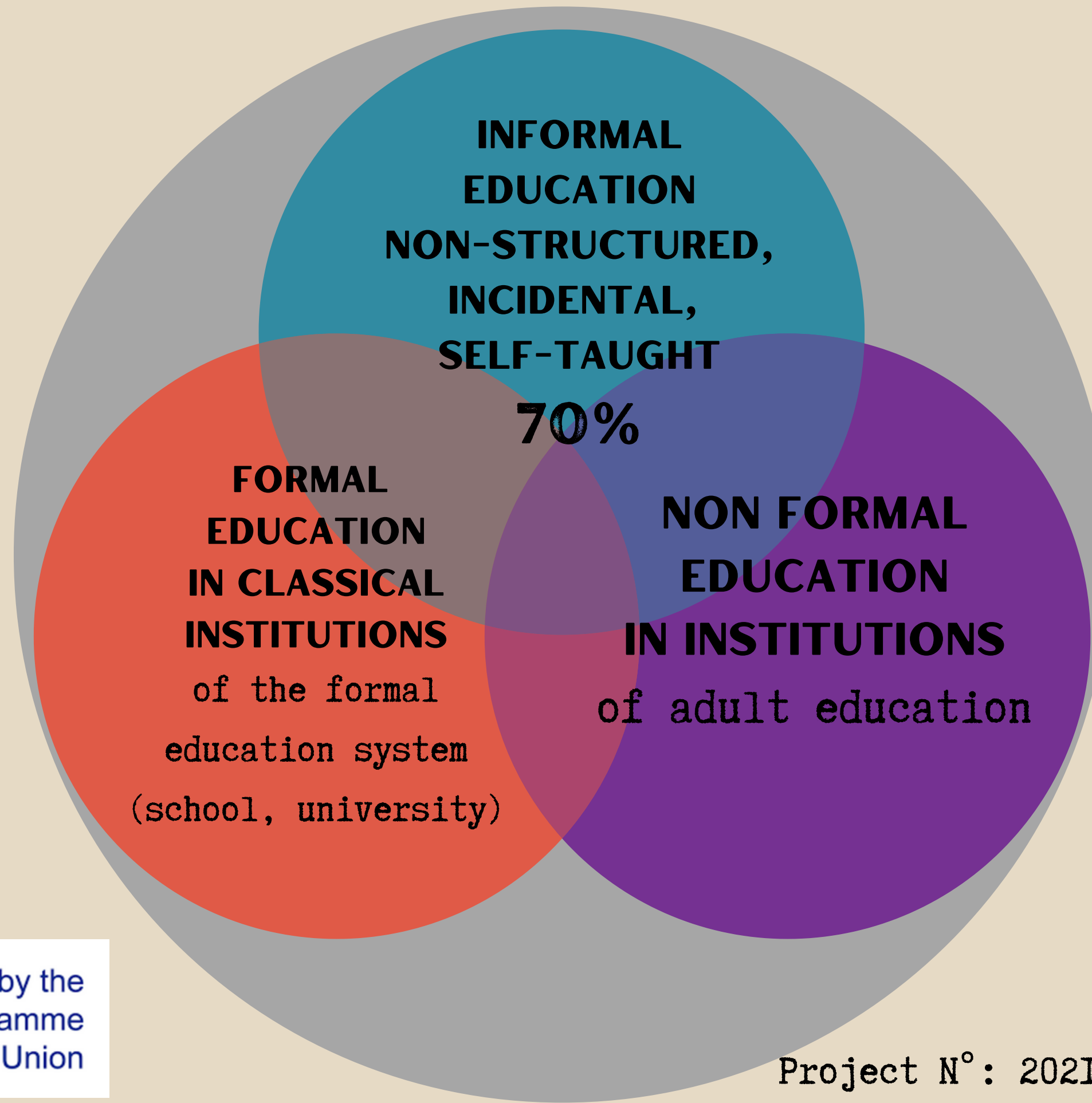


# FORMS OF EDUCATION

**FABLE**



**Sozialwerk**  
Dürener Christen

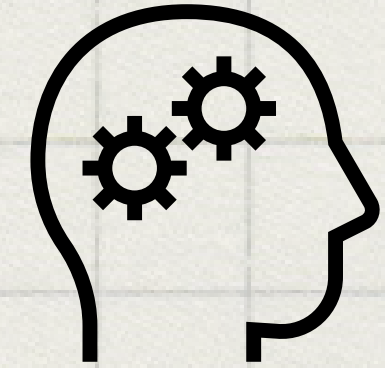


Co-funded by the  
Erasmus+ Programme  
of the European Union



Project N°: 2021-I-IT03-KA220-YOU-000028607

# **NON-FORMAL LEARNING IN OUR SEWING WORKSHOP/CREATIVE WORKSHOP**



Non-formal learning is a planned learning process in a non-formal training framework.

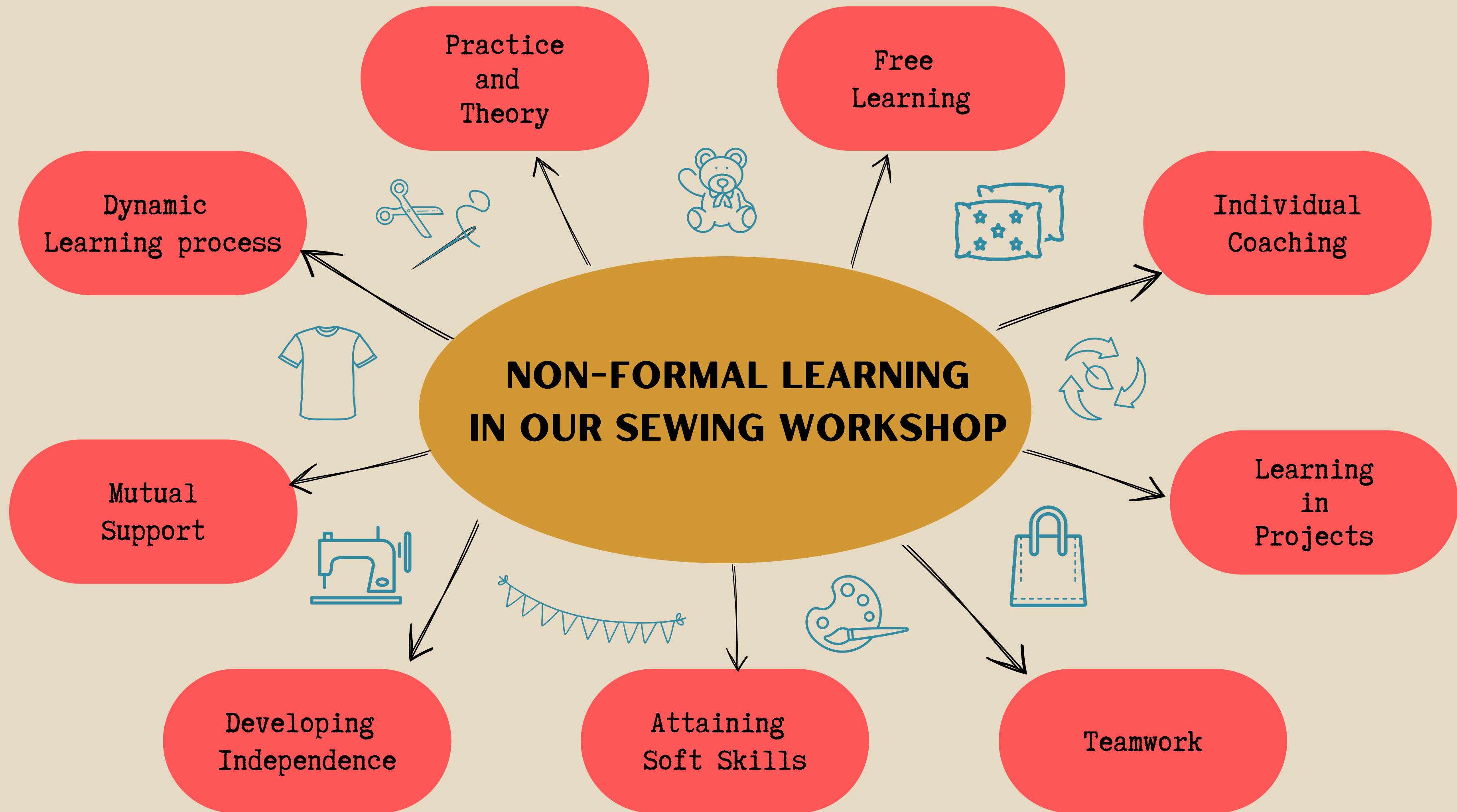
In our workshop, we mainly impart knowledge on the subject of sewing  
and prepare for a regular employment relationship.

Non-formal learning, in contrast to a classical training, takes place in a rather free  
framework and is individually adapted to our participants.

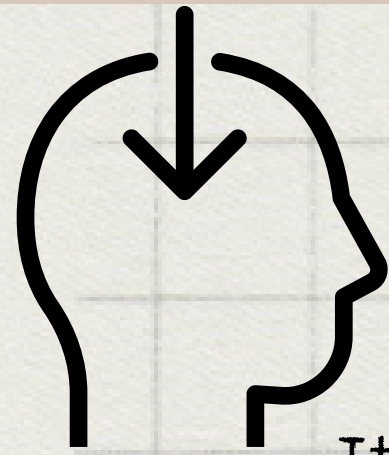
We show and explain the different sewing techniques and explain the individual work steps  
depending on the learning level and condition of our participants.

We also teach important soft skills that are important for successful employment, such as  
reliability, punctuality, honesty and politeness.

To make learning more varied, we also like to use digital programmes to create sewing  
instructions and tasks to test knowledge.







# INFORMAL LEARNING IN OUR SEWING WORKSHOP/CREATIVE WORKSHOP

Informal learning concerns a learning process that is more incidental.

It is not planned learning for a specific goal that occurs incidentally in the work process.

In our workshop we work in a project- and team-oriented way.

We, the instructors, set the task, in which the participants can and should contribute their own ideas.

In this way they develop new self-confidence,

discover their creative side and learn to work on a task independently.

Along the way, their manual dexterity is developed and their ability to structure themselves is enhanced.

And they learn certain skills such as how to put materials and colours together

or how to create something new out of something old.

Another approach to informal learning for us are educational experience and leisure activities,

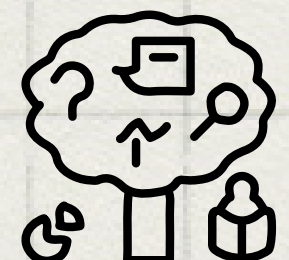
which we offer in our group in addition to the work in the workshop.

Learning in the recreational pedagogical area is oriented towards the effects that result from the

interaction with things from nature and the environment.

The mutual interaction, the development and support of abilities, the approach

and the confrontation with limits are promoted.



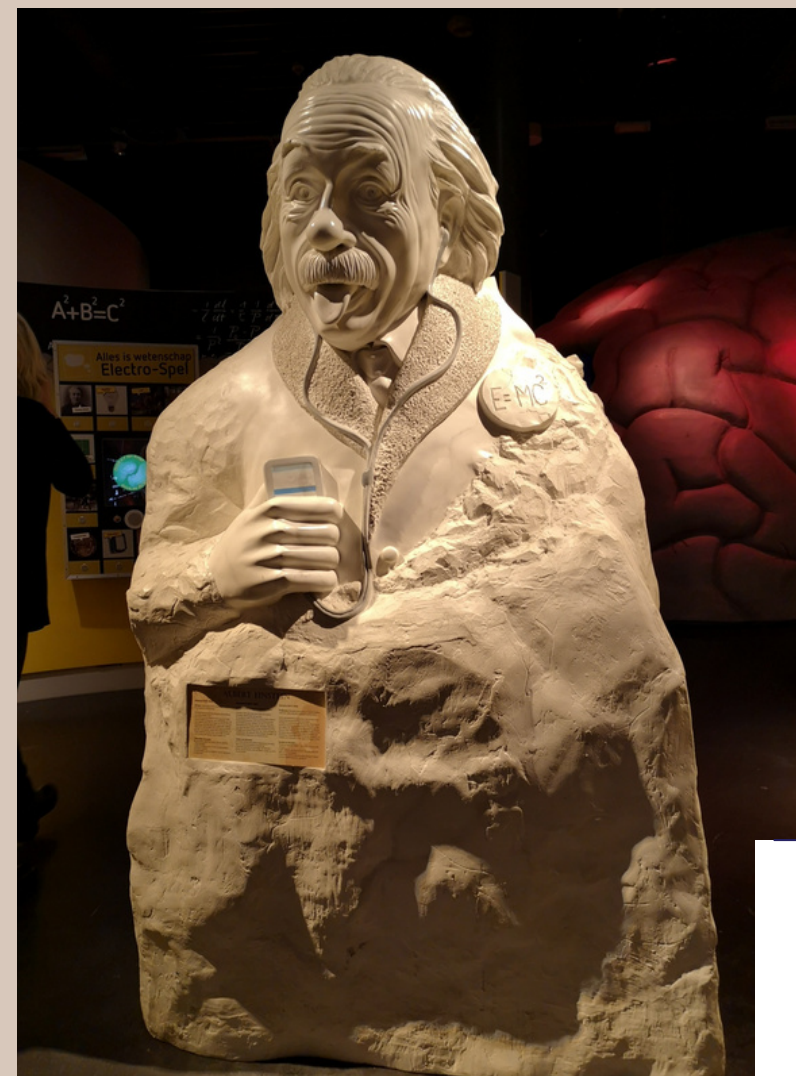




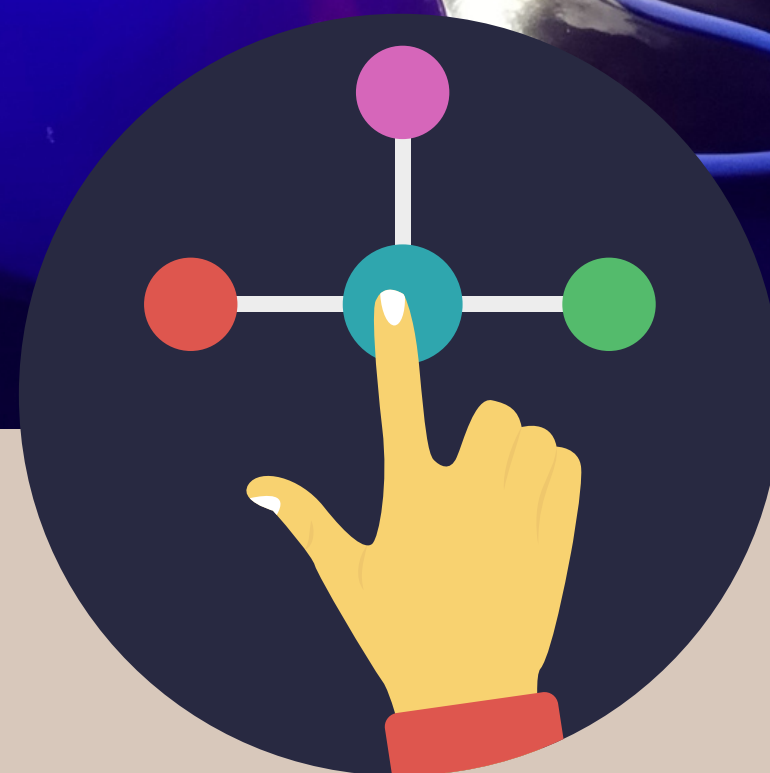
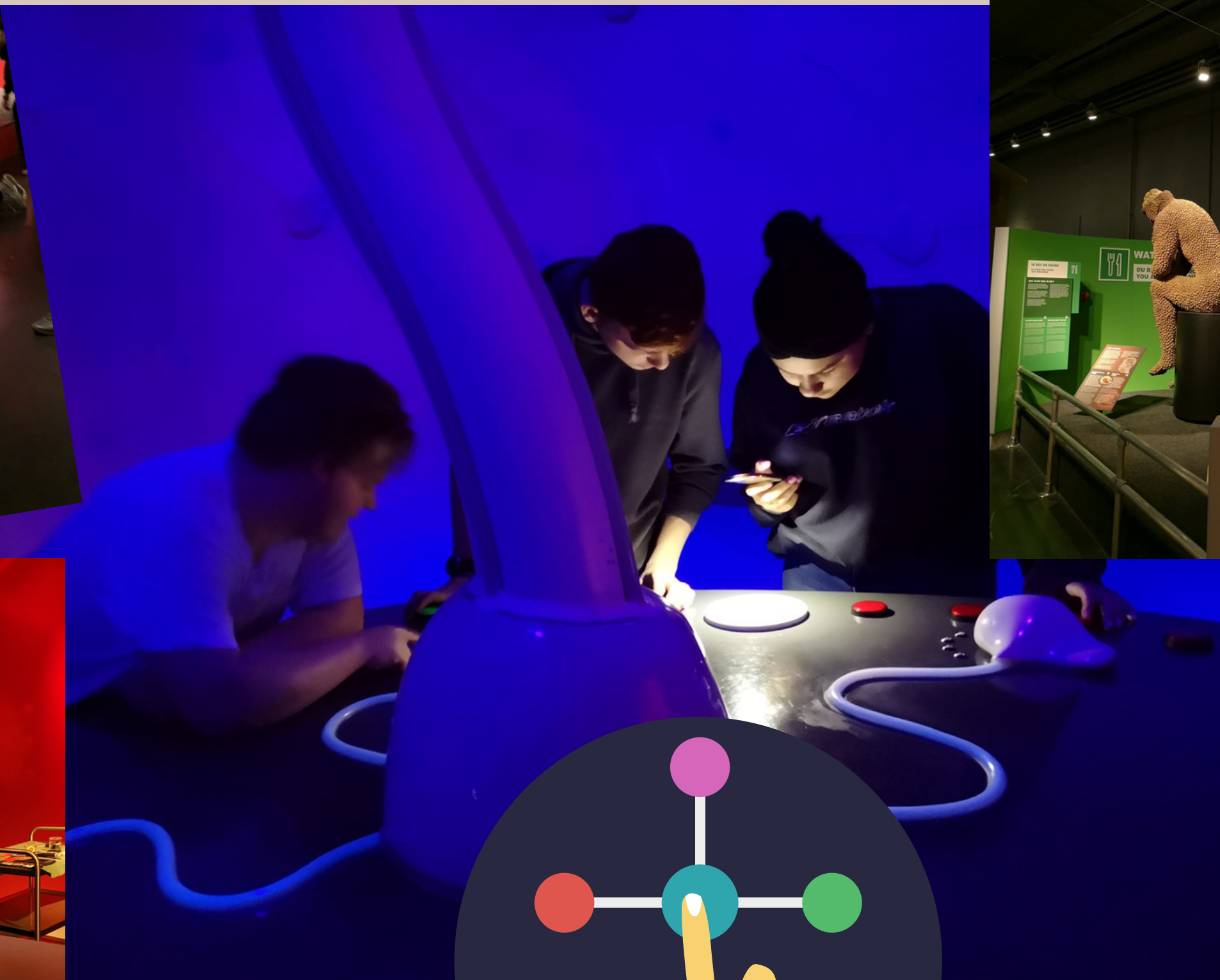
Informal learning?  
It can look like this for us...



Leisure activities such  
as visits to museums  
and other  
cultural institutions.







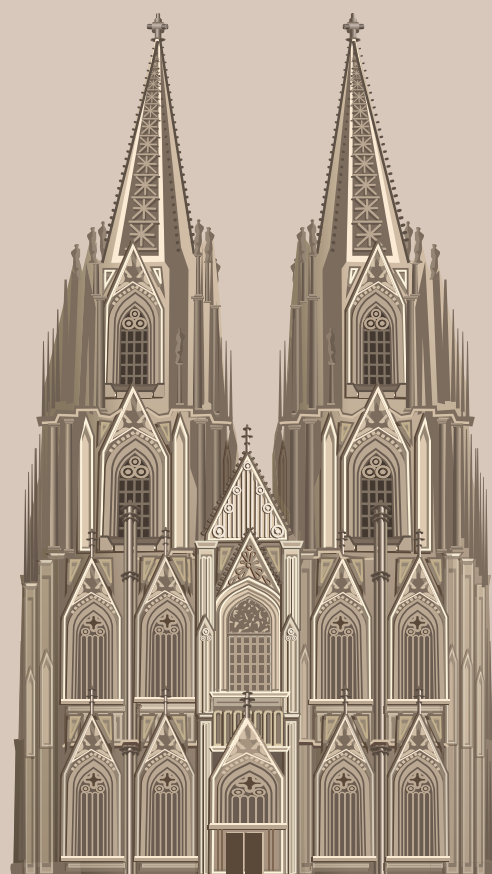




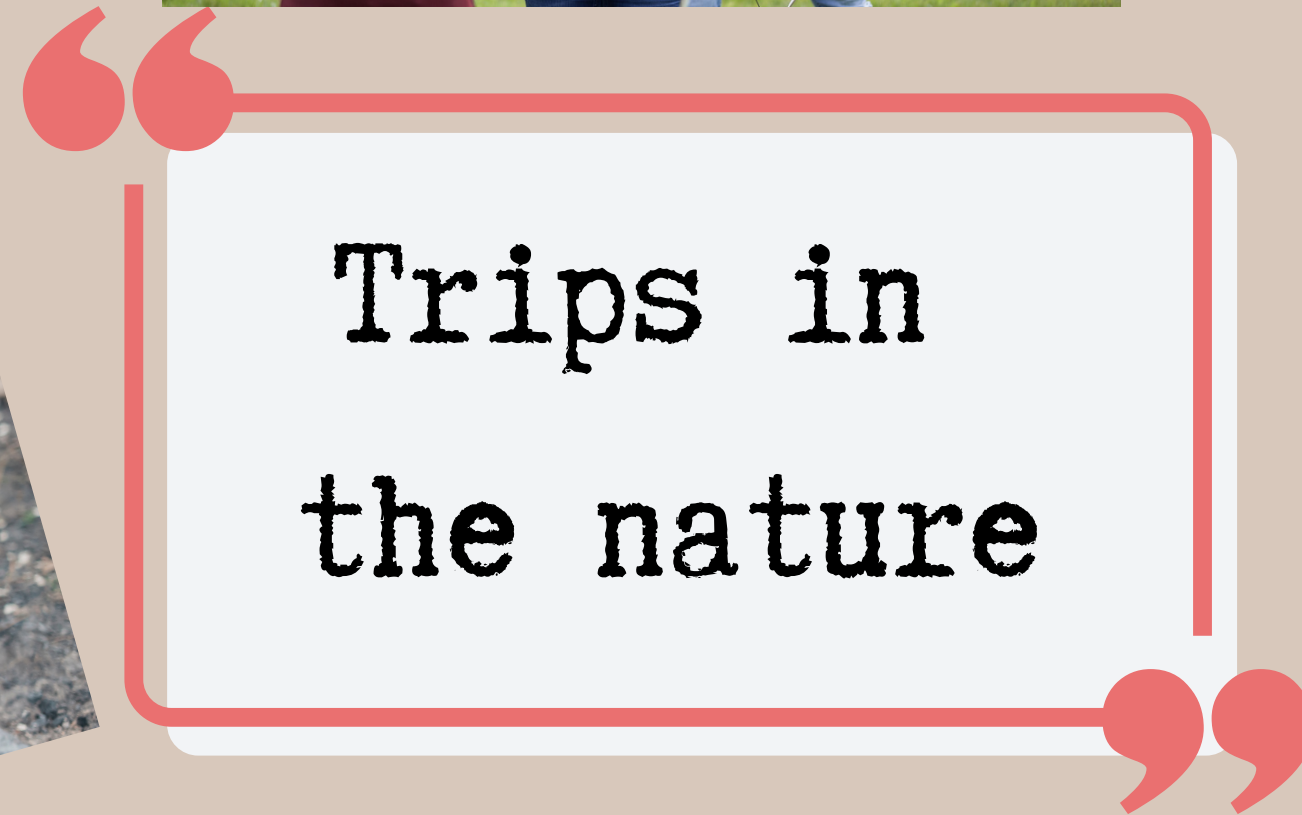
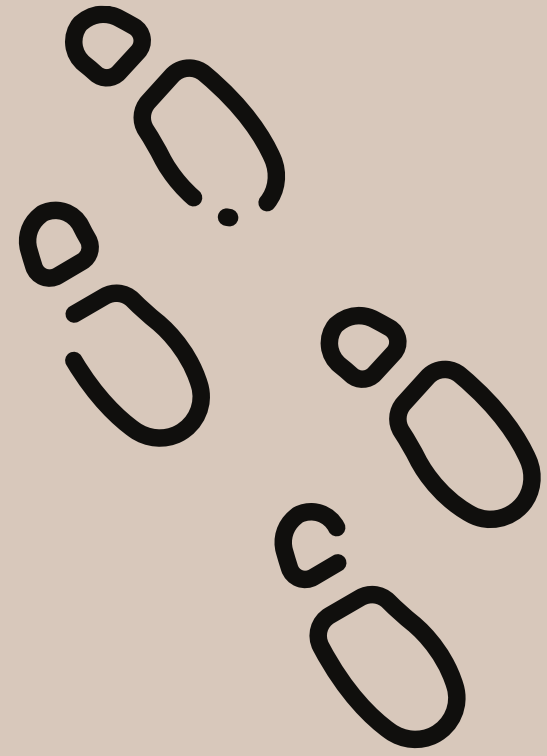




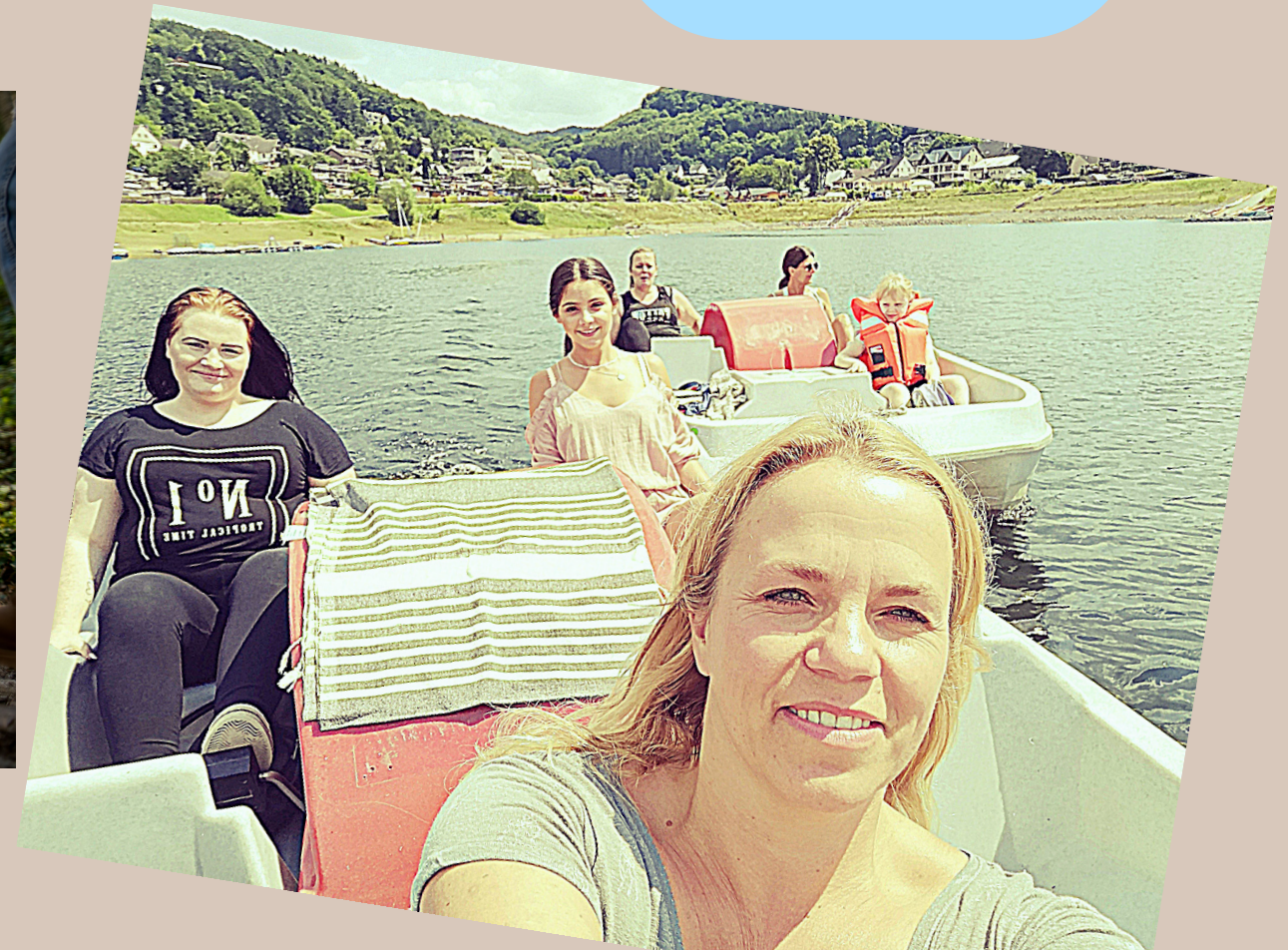
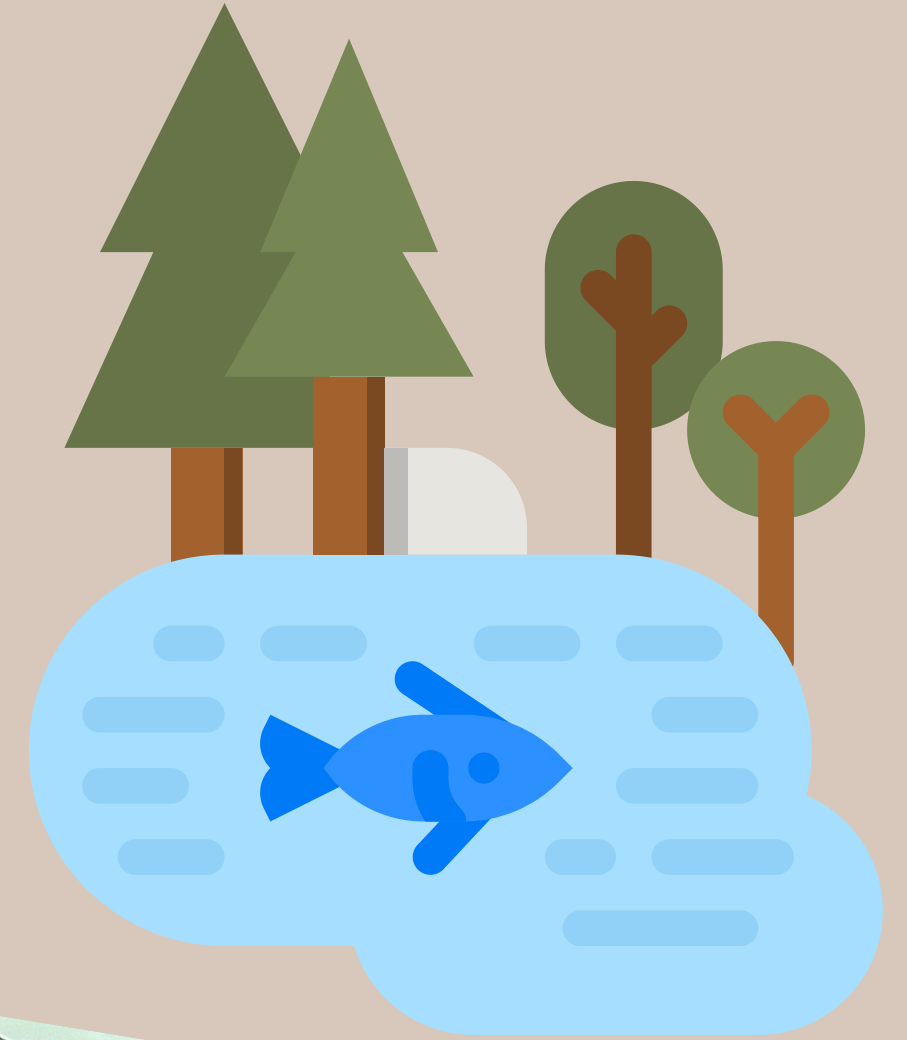
World Heritage  
Cologne Cathedral



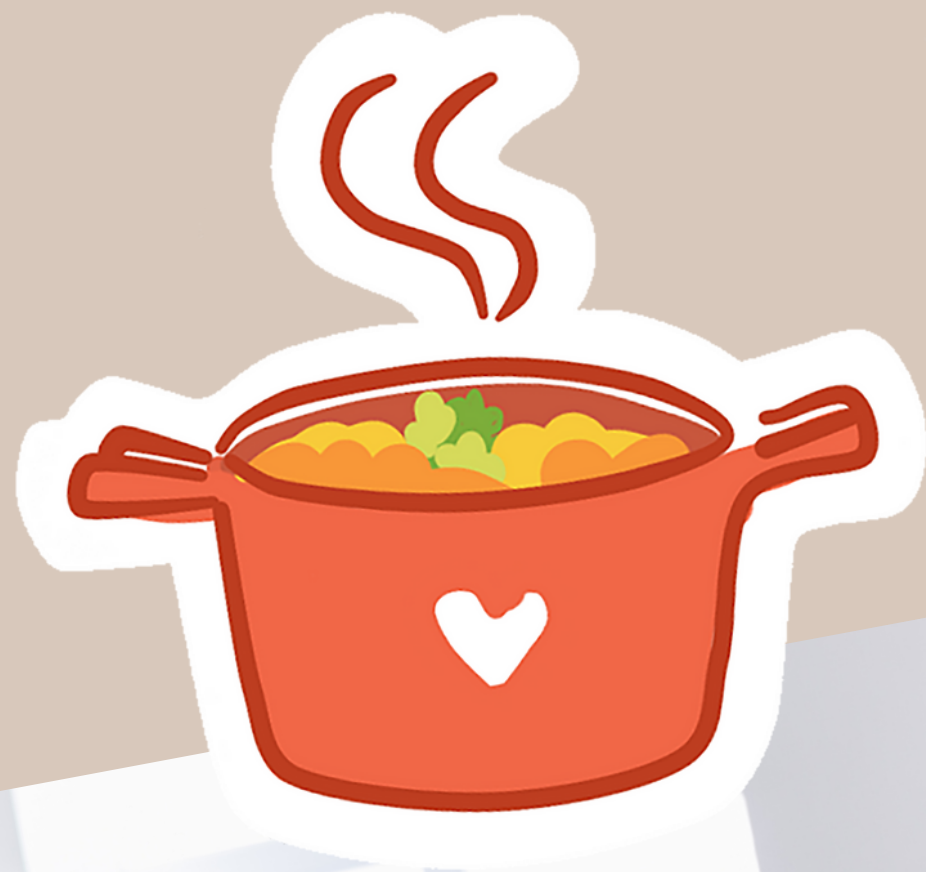












Cooking and baking  
together.





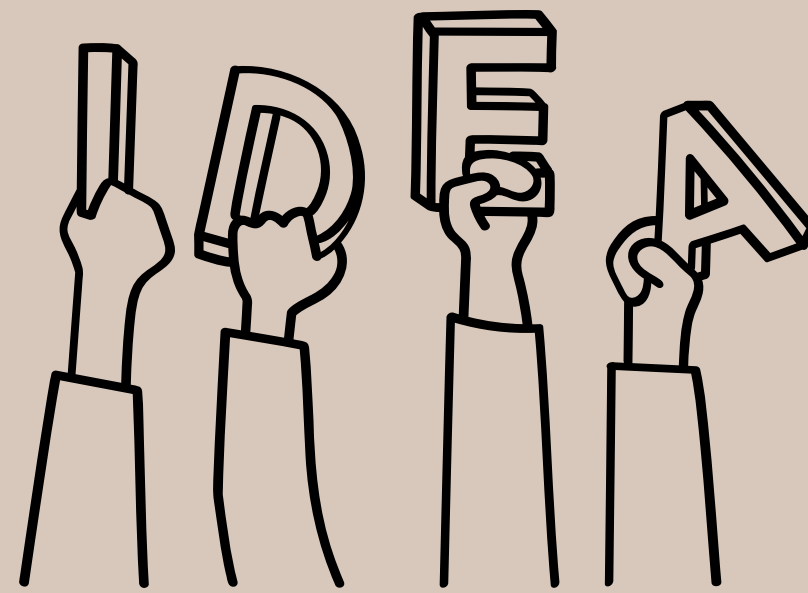


Setting up a market stall,  
selling our  
handmade products  
and coming into  
contact with people.





Solving  
difficult group tasks  
together .





# GIRL'S DAY



the future is  
**FEMALE**

